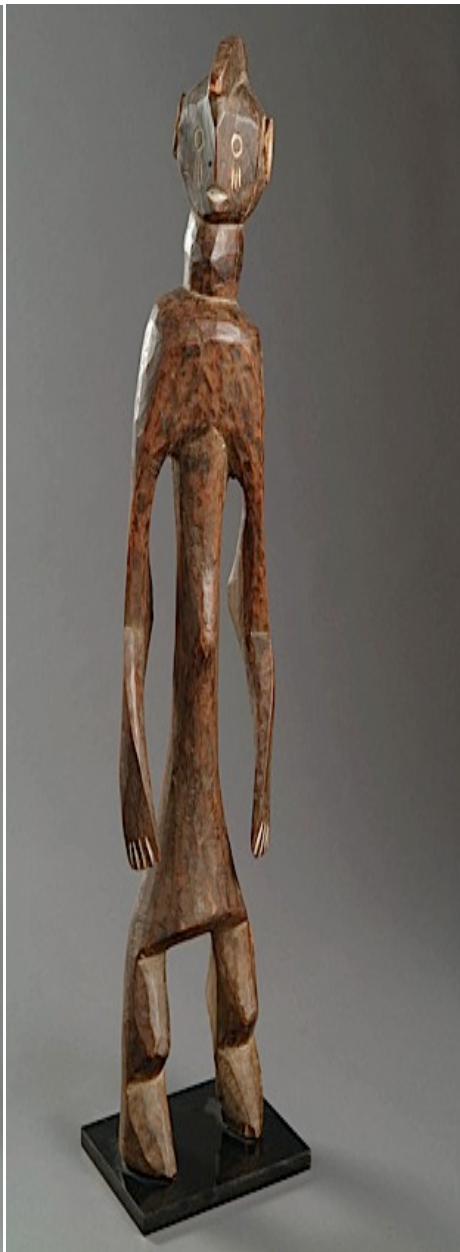


Entourer la lettre qui vous semble correspondre :

- Un objet authentique (A)
- Un objet tardif (B)
- Une copie (C)



A B C



A B C



A	B	C	A	B	C
---	---	---	---	---	---



A B C



A B C



A B C



A B C



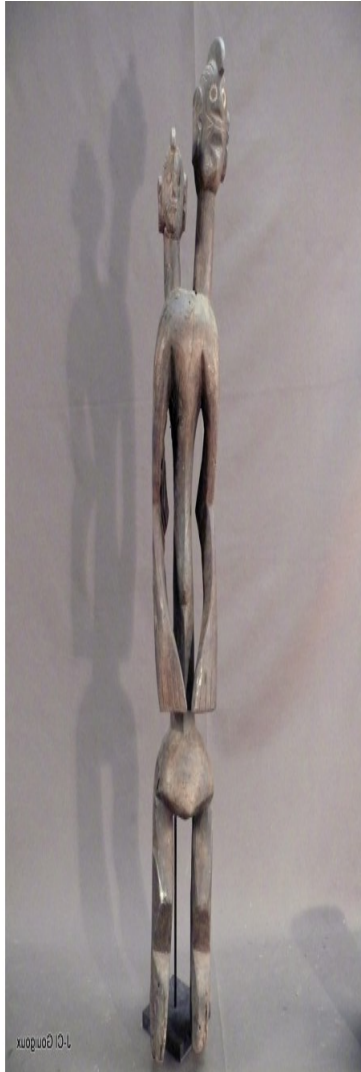
A B **C**



A B **C**



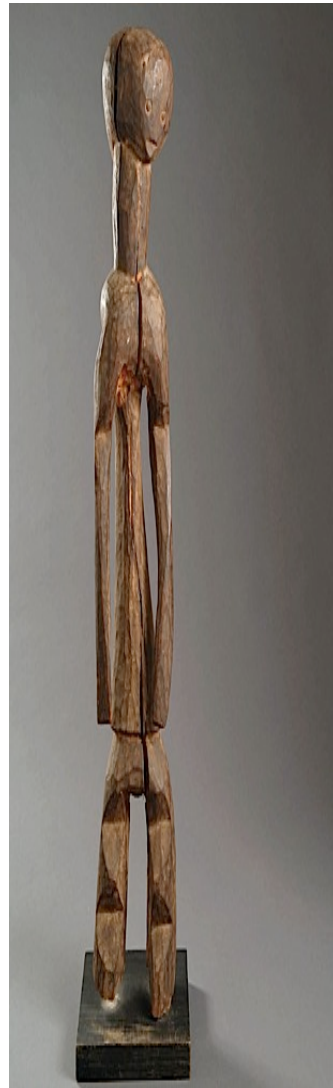
A B **C**



A B **C**



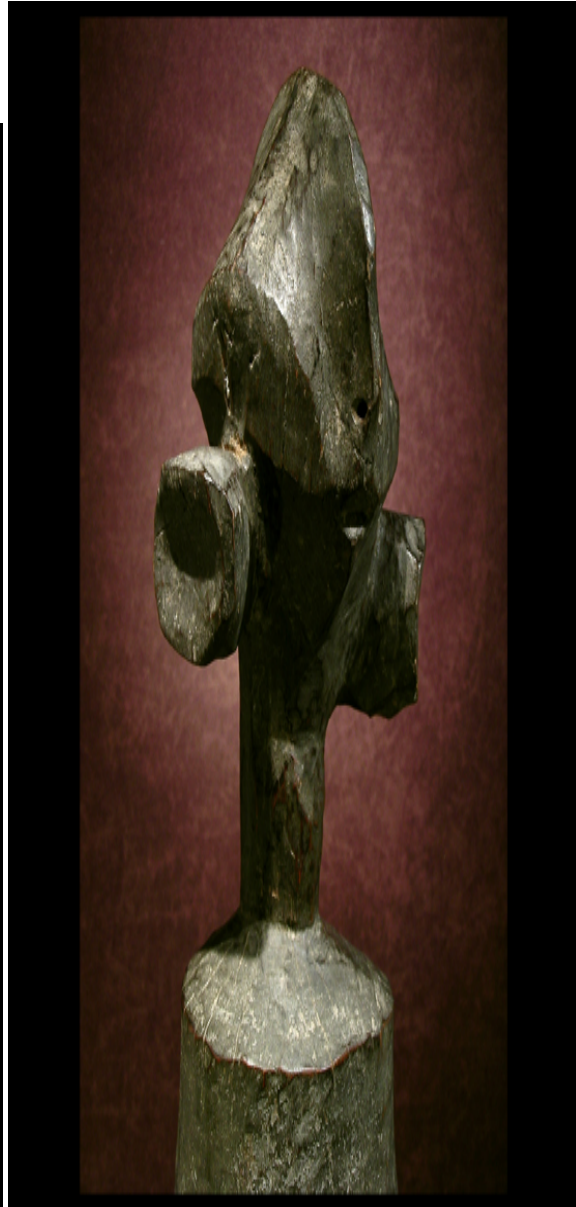
A B **C**



A B C



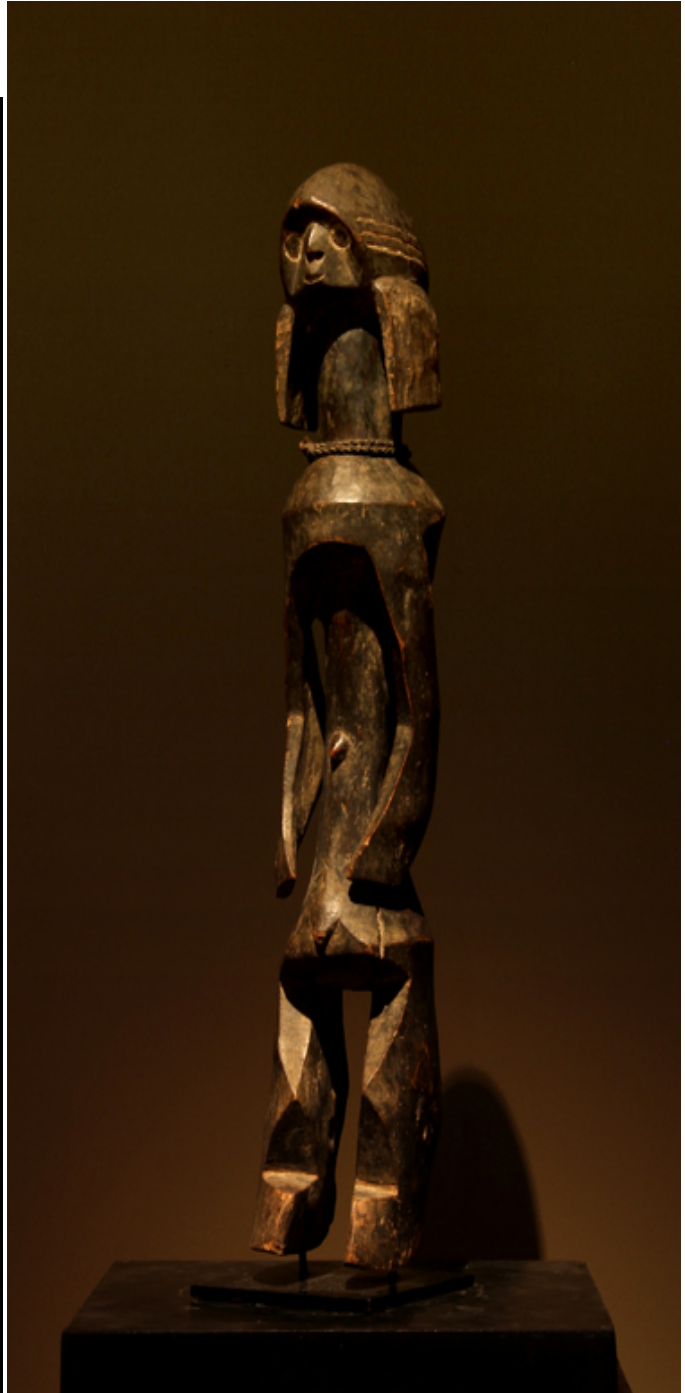
A B C



A B C



A B C



A B C



© All rights reserved

A B C



A B **C**



A B C



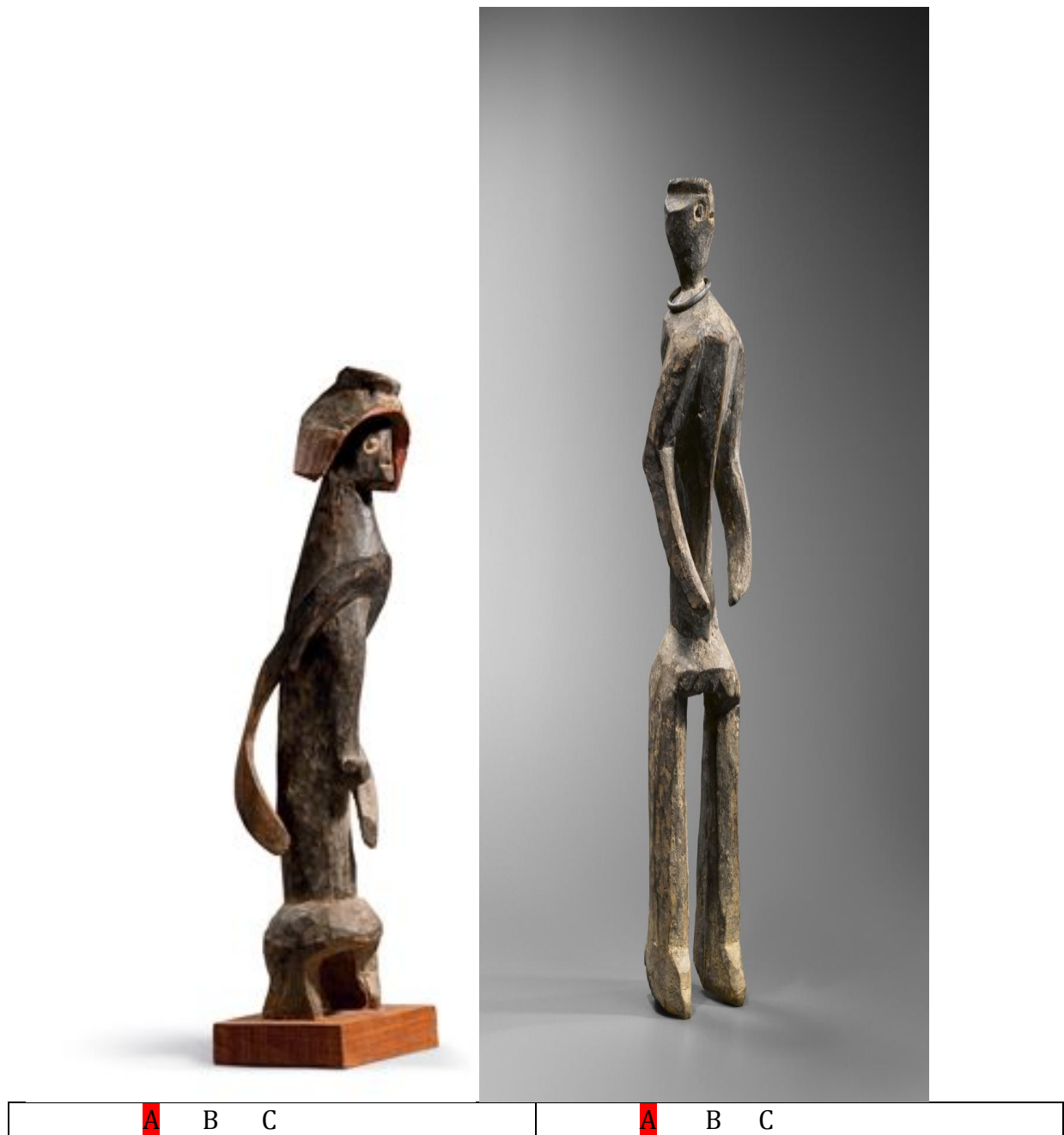
A B C

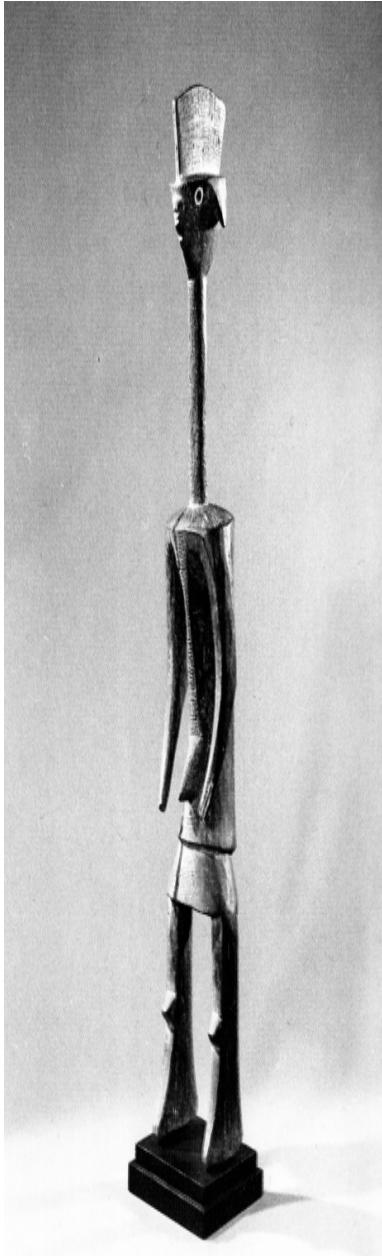


A

B

C





© All rights reserved



A	B	C	A	B	C
---	---	---	---	---	---



